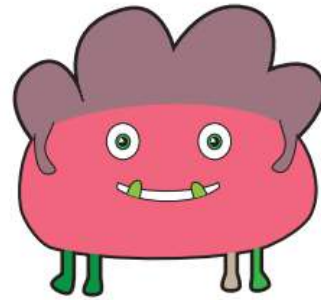


Year 1 Phonics Screening Check

glips



What is phonics?

Children are taught to read by breaking down words into separate sounds or 'phonemes'. They are then taught how to blend these sounds together to 'say the sounds and read the word'.

We have a 30 minute phonics lesson each day and the children are encouraged to use these strategies to read and write in other lessons.

There are 40+ different sounds.



KS1 Phonics Screening Check

The Year 1 phonics screening check is not a formal test, but a way for teachers to ensure that children are making sufficient progress with their phonics skills to read words and that they are on track to become fluent readers who can enjoy reading for pleasure and for learning.

WHAT IS THE YEAR 1 PHONICS SCREENING CHECK?

The phonics screening check will be taken individually by all children in Year 1 in England – this began in June 2012. It is designed to give teachers and parents information on how your child is progressing in phonics. It will help to identify whether your child needs additional support at this stage so that they do not fall behind in this vital early reading skill.

HOW IS THE PHONICS SCREENING CHECK COMPLETED?

There are two sections in the 40-word check and it will assess phonics skills and knowledge learned through Reception and Year 1.

Your child will read four words per page for their teacher and they will most often do the check in one sitting of about 5-10 minutes.

in

at

beg

sum

ot



vap



osk



ect



HOW IS THE PHONICS SCREENING CHECK COMPLETED?

It is a school-based check to make sure that your child receives any additional support promptly, should they need it.

There will be a few practice words first to make sure your child understands the activity.

We have also regularly completed past papers – it will in no way be new to your child.

WHAT WILL IT CHECK?

It will check that your child can:

Sound out and blend graphemes in order to read simple words.

Read phonically decodable one-syllable and two-syllable words, e.g. cat, sand, windmill.

Read a selection of nonsense words which are referred to as alien words.

at

vap



The 2022 Phonics Screening Check

Section 1				
Word	Structure	Initial Code	Extended Code	Polysyllabic words
Nonsense words				
bem	cvc	U4		
dax	cvcc	U7		
kig	cvc	U5		
eld	vcc	U8		
besh	cvc	U11		
quab	ccvc	U11	ECU25 L10	
barp	cvc		ECU24 /ar/	
chell	cvc	U11		
grux	cvcc	U9		
smung	ccvc/cvcc*	U11		
nesk	cvcc	U8		
foint	cvcc		ECU23 /oy/	
Real words				
thud	cvc	U11		
hang	cvc/cvcc*	U11		
coin	cvc		ECU23 /oy/	
shell	cvc	U11		
twig	ccvc	U9		
flick	ccvc	U11		
vest	cvcc	U8		
horns	cvcc		ECU19 /or/	
Section 2				
Nonsense words				
vair	cv		ECU20 /air/	
cloat	ccvc		ECU4	
tirt	cvc		ECU6	
whike	cvc		ECU11 /ie/	
plunt	ccvcc	U10		
flards	ccvcc		ECU24 /ar/	
spran	cccvc	U10		
splew	cccv		ECU10 /oo/	
Real words				
globe	ccvc		ECU4	

teams	cvcc		ECU2	
bowl	cvc		ECU4	
chase	cvc		ECU1	
print	ccvcc	U10		
clouds	ccvcc		ECU8	
spree	cccv		ECU2	
stroke	cccvc		ECU4	
visit	cv cvc			IC
fabric	cv ccvc			IC
trapeze	ccv cvc			ECU2
concrete	cvc ccvc			ECU2
*accent dependent				

WHAT ARE ALIEN WORDS AND WHY ARE THEY INCLUDED?

These are words that are phonically decodable but are not actual words with an associated meaning e.g. brip, snorb. Alien words are included in the check specifically to assess whether your child can decode a word using phonics skills and not their memory.

beg

sum

osk



ect



WHAT ARE ALIEN WORDS AND WHY ARE THEY INCLUDED?

The alien words will be shown to your child with a picture of an alien. This not only makes the check a bit more fun, but provides the children with a context for the nonsense word which is independent from any existing vocabulary they may have.

Crucially, it does not provide any clues, so your child just has to be able to decode it. Children generally find nonsense amusing so they will probably enjoy reading these words.

IS THERE A PASS MARK?

Historically the pass mark has been 32 out of 40.

However, if children do not reach the required standard, then the teacher will be in touch to discuss plans and offer additional, tailored support to ensure that your child can catch up.

Children progress at different speeds so not reaching score does not necessarily mean there is a problem. Your child will re-sit the check if needed in Year 2.

WHEN WILL THE SCREENING TAKE PLACE?

The screening will take place throughout the week beginning Monday 12th June. The children cannot retake the test at any other time so it is very important your child is in school during this week.

HOW CAN I HELP

Each week we will be doing a mock test with your child. We can then generate any of the words that they did not read correctly and print it off to come home for them to practice.

Please remind your children to 'say the sounds and read the word'. Where they are struggling with the sound, we would say 'this is the ____ sound in this word'. Eg the ai in rain.

PLEASE REMEMBER

Phonics is not the only thing needed to become a fluent reader.

Please continue to read with your child each night and encourage them to:

Say the sounds and read the word

If they are stuck, encourage them to try the different sounds for that spelling until the word makes sense

And most importantly ENJOY READING!

QUESTIONS?

