

Information on the KS1 SATs Tests

May 2023

Aims

- ▶ To explain what 'SATs are'
- ▶ Talk through SATs month
- ▶ To explain how we can best prepare the children
- ▶ Answer any questions you may have



The aims of these statutory assessments is to understand pupil performance in relation to national expectations and comparisons.

- ▶ Children will be given a raw score, a scaled score and confirmation of whether or not they have achieved the National Average:
- ▶ **Below 100 scaled score = Working towards**
- ▶ 100 scaled score = Expected
- ▶ 110 scaled score = Greater Depth

The key areas for testing are:

- ▶ Reading
- ▶ Maths
- ▶ GPS (Grammar, punctuation and spelling) – *optional however we choose to take them*

Writing

- ▶ Is not 'tested' but children complete moderated pieces of work throughout the year, until June
- ▶ Teacher judgement

KS1 English - Reading

- ▶ Greater emphasis on the comprehension elements of the curriculum.
- ▶ There will be a mixture of text types.
- ▶ Paper 1 has the answers and text together.
- ▶ Paper 2 will have 3 unrelated texts of increasing difficulty and separate answer booklet.

KS1 English – Reading Paper 1

On Thursday, when her mother said, “Molly, tidy up!”, Molly carried on dancing, making a massive mess of her bedroom.

And when Molly went for tea, she ate it super fast and raced back to her bedroom.

Molly imagined Octopus would be very busy today because she'd left a huge mess.

But she had a surprise... there wasn't an octopus: it was her mother!

So on Friday, when her mother said, “Molly, tidy up!”, she did.



8 Why did Molly rush to finish her tea?

Tick **one**.

She wanted to carry on playing.

She wanted to tidy her room.

She wanted to see the octopus.

She wanted to carry on dancing.

9 Draw **three** lines to show where Molly was playing on each day.

Monday

garden

Tuesday

living room

Wednesday

bedroom

5 Why was Molly always too busy to tidy up?

6 Where did Molly look for the octopus?

Write down **one** place.

KS1 English – Reading paper 2



Games From
Around the World



Cobweb Morning



A New Home

Reading Booklet

2018 key stage 1 English reading booklet

2 Find and **copy two** things that could be hidden in *Pilolo*.

1. _____

2. _____

4 What do the words *Oonch Neech* mean?

7 Put ticks in the table to show which sentences are **true** and which are **false**.

Sentence	True	False
In <i>Pilolo</i> , players try to find hidden items.		
In <i>Statues</i> , one child shouts, 'freeze'.		
In <i>Oonch Neech</i> , players must stand very still.		
<i>Kangaroo Skippyroo</i> is a game all about luck.		

KS1 Maths

- ▶ There will be 2 papers
 - Paper 1 arithmetic
 - Paper 2 reasoning

KS1 Maths – Arithmetic Test

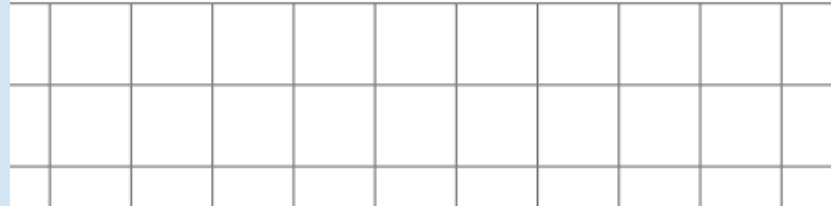
- ▶ The arithmetic test assesses basic mathematical calculations – there will be no word problems questions in the arithmetic paper.
- ▶ Number bonds and **times table knowledge** will give children an advantage.
- ▶ Gridded paper is provided in answer spaces for questions on the arithmetic paper.

KS1 Maths – Arithmetic Test

$5 + 10 + 5 =$

$98 + 4 =$

$22 + 22 =$

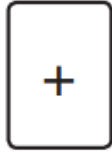


$\frac{1}{2}$ of 90 =

$+ 8 = 12$

KS1 Maths – Reasoning Tests

7 Here are two cards.



Choose a card to make each calculation correct.

One is done for you.

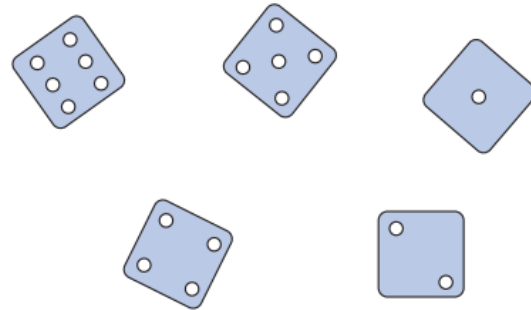
$$4 \quad \boxed{+} \quad 1 = 5$$

$$23 \quad \boxed{} \quad 1 = 22$$

$$40 \quad \boxed{} \quad 1 = 39$$

$$19 \quad \boxed{} \quad 1 = 20$$

8 Circle the **three** dice that add up to **13**



11 Complete the number sentences.

One is done for you.

$$\frac{1}{2} \text{ of } \boxed{8} = 4$$

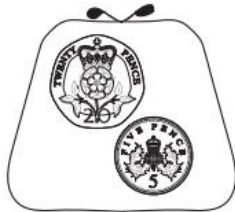
$$\frac{1}{2} \text{ of } \boxed{} = 3$$

KS1 Maths – Reasoning Test

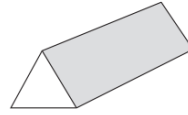
15 Amy has 50p.

She buys a pencil for 30p.

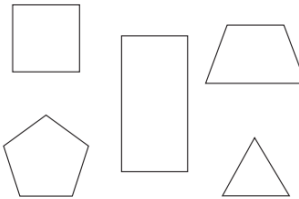
Tick the purse that shows how much money Amy has left.



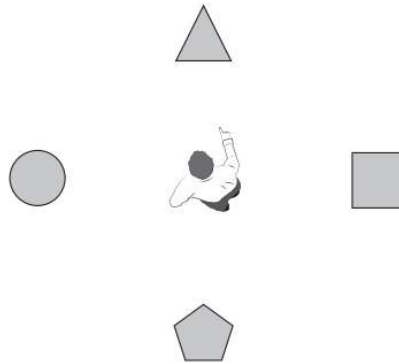
16 Here is a prism.



Tick **all** the shapes that are faces on this prism.



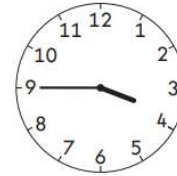
20 Sam is pointing at the triangle.



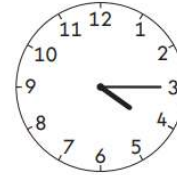
He turns a **half turn**.

Tick the shape Sam is pointing at after the half turn.

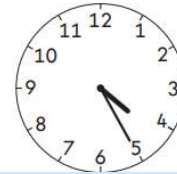
17 Match each clock to the time it shows.



twenty-five past four



quarter to four



quarter past four

KS1 English – GPS.

- ▶ Emphasis on knowing and applying grammatical terminology.
- ▶ Full range of punctuation will be tested.
- ▶ The spelling paper will focus on specific spelling patterns.
- ▶ These papers will support and provide further evidence towards the overall English writing judgement.

KS1 GPS

1 Draw lines to join two words that can become one word.

One has been done for you.

Word 1

white

rain

tooth

space

Word 2

ship

board

coat

paste



10 Circle the **two** adjectives in the sentence below.

The new supermarket is the biggest in town.

8 Rewrite the verb in the box to complete the sentence in the correct **tense**.

Emily _____ to school and met Li at the gate.

run

13 What type of word is flew in the sentence below?

The green parrot flew to the top of the tree.

Tick **one**.

an adjective

a noun

an adverb

a verb

Science

- ▶ Science is not administered as a statutory assessment at the end of KS1, however, we are required to judge whether a pupil is **working** at the standard and able to demonstrate all of the working scientifically statements and science content taught in Key Stage 1.
- ▶ We use assessments taken throughout KS1 to support this judgement, as well as in class evidence.

- ▶ KS1 SATs tests are only one part of the evidence that goes towards teacher assessment.
- ▶ The assessments are marked in school and the results submitted to the Local Authority.
- ▶ Some schools are selected to be moderated to ensure consistency across schools.

How can I help my child at home?

- ▶ Encourage them to complete their weekly spellings as well as their common exception words.
- ▶ Hear them read every night (and a wide variety of different texts) and ask questions to discuss what they've read.
- ▶ Go through any worksheets they bring home and discuss what they have been learning.
- ▶ There are further resources to support your children at home available on the school website.

Thank you for your continued
support.

Any questions?